

Coronavirus disease 2019 (COVID-19) Situation Report – 79

Data as received by WHO from national authorities by 10:00 CET, 8 April 2020

HIGHLIGHTS

- One new country/territory/area reported cases of COVID-19 in the past 24 hours: Saint Pierre and Miquelon.
- WHO has published a guidance document on the rational use of personal protective equipment (PPE) in healthcare and home care settings, as well as during the handling of cargo. The document assesses the current disruption in the global supply chain and outlines considerations for decision-making during severe shortages of PPE. For more details, please see [here](#).
- WHO has listed the first two diagnostic tests for emergency use during the COVID-19 pandemic. The move should help increase access to quality-assured, accurate tests for the disease. It also means that the tests can now be supplied by the United Nations and other procurement agencies supporting the COVID-19 response. For more information, please see [here](#).
- WHO has published a guideline on food safety, 'COVID-19 and Food Safety: Guidance for Food Businesses'. For more details, please see [here](#).
- The Global Health Cluster, which WHO leads, has been supporting 29 countries to implement the Global Humanitarian Response Plan for COVID-19. This includes addressing newly-emerging needs and preserving the existing humanitarian health actions and commitments of the Humanitarian Response Plans for 2020. For more information on partner coordination, please see 'Subject in Focus'.

SITUATION IN NUMBERS total (new) cases in last 24 hours

Globally

1 353 361 confirmed (73 639)
79 235 deaths (6695)

European Region

720 219 confirmed (33 881)
57 369 deaths (4904)

Region of the Americas

417 416 confirmed (33 174)
12 597 deaths (1500)

Western Pacific Region

114 667 confirmed (1026)
3922 deaths (30)

Eastern Mediterranean Region

81 993 confirmed (3428)
4314 deaths (165)

South-East Asia Region

10 707 confirmed (1575)
426 deaths (64)

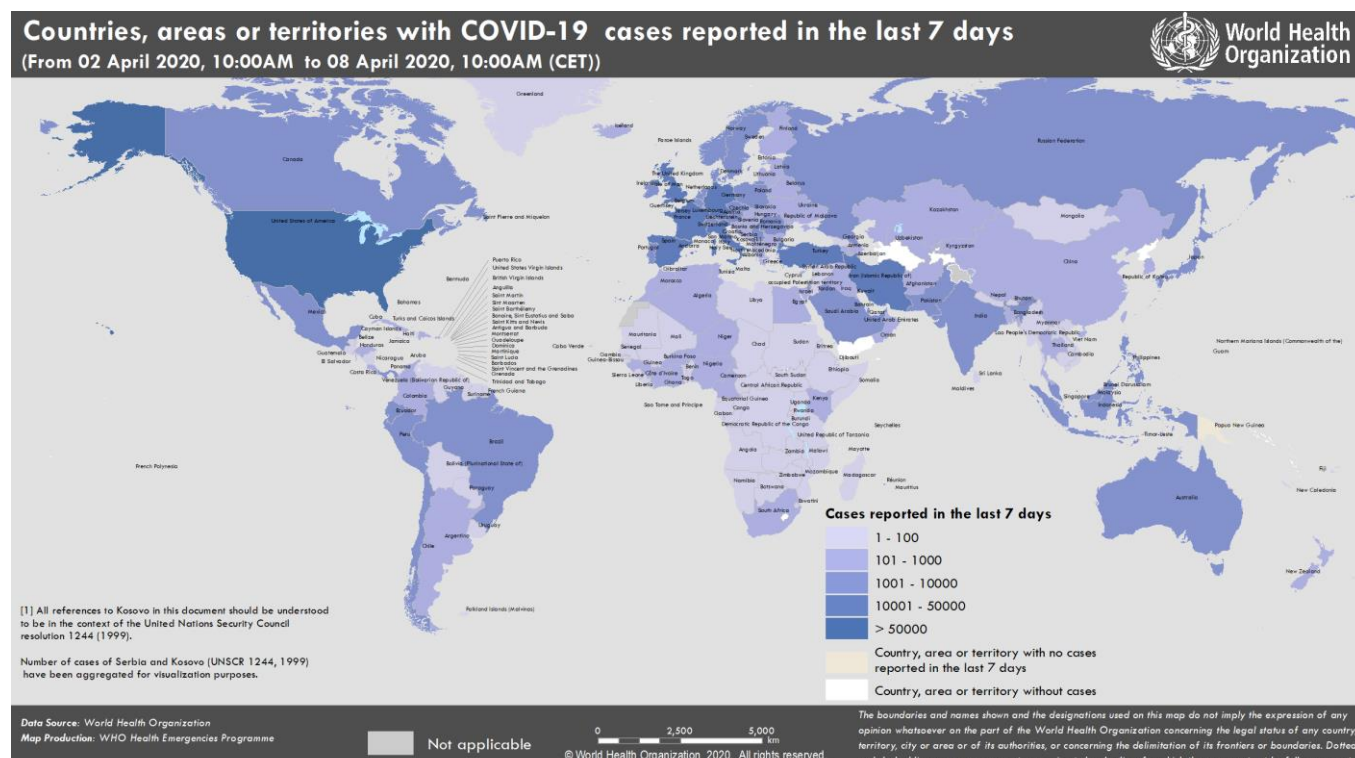
African Region

7647 confirmed (555)
326 deaths (32)

WHO RISK ASSESSMENT

Global Level Very High

Figure 1. Countries, territories or areas with reported confirmed cases of COVID-19, 8 April 2020



SUBJECT IN FOCUS: Partner Coordination

Global Health Cluster

- The Global Health Cluster, which WHO leads, has been supporting 29 countries to implement the Global Humanitarian Response Plan for COVID-19. This includes addressing newly-emerging needs and preserving the existing humanitarian health actions and commitments of the Humanitarian Response Plans for 2020.
- In collaboration with the Gender-Based Violence Area of Responsibility (GBV AoR), a webinar was held on “Ensuring continuity of essential health services for survivors of GBV during COVID-19”. The GBV AoR is the global level forum for coordination and collaboration on GBV prevention and response in humanitarian settings.

Emergency Medical Teams (EMT) Initiative

- Over 100 Emergency Medical Teams (EMT) and focal points worldwide are working closely with the EMT Secretariat, and are continuously engaging in monitoring, guiding, and facilitating national and international COVID-19 response operations.
- As of 5 April, five international EMTs have been deployed to eight countries. Twenty-nine EMTs are supporting and reinforcing local national health systems across all regions. EMTs are also involved in discussions to strengthen capacity and support to countries in Africa. In addition, WHO is working with EMTs worldwide to identify technical experts and coordinators who can support integrated public health and clinical teams.
- WHO has finalised technical guidance on COVID-19 community facilities and treatment centers, pre-hospital emergency medical services recommendations, and recommendations for medical surge capacity and deployments of EMTs. A modular training package on COVID-19 is currently being developed for the EMT workforce.

Global Outbreak Alert and Response Network (GOARN) deployments and partnership activities

- WHO has deployed 59 experts from 27 partner institutions and technical networks to support countries. Twenty-two partners of the GOARN Capacity Development Network are meeting this week to strengthen coordination of training and capacity building activities.
- The International Federation of Red Cross and Red Crescent Societies (IFRC), UNICEF, and WHO are supporting Risk Communications and Community Engagement (RCCE) with a special focus on highly vulnerable populations, and integration of humanitarian partners to support social distancing solutions amongst migrants and in camp settings. This week’s focus is mask guidance among the general population, and in the event of easing of movement restrictions. The partnership is also looking at social science and community insights, including perception surveys and community engagement during lockdowns, to explore guidance, operational challenges and lessons learnt from ongoing experience.

Global Outbreak Alert and Response Network (GOARN) research activities

GOARN research activities include:

- Creating a repository of RCCE data collection tools to aid researchers and public health organizations to roll out rapid assessments in their communities of interest. If you would like to contribute, please contact Dr. Jeni Stolow at jstolow@tulane.edu.
- Coordination with Field Epidemiology Training Programmes, regional and global networks, and alumni networks, on exchange of protocols and tools for investigations and response.
- Coordination of global partners to support the WHO COVID-19 Research Innovation and Research Roadmap Social Science Working Group. Ongoing research includes psychosocial impact of community-based interventions, psychosocial assessment of healthcare workers (HCWs), HCW readiness for COVID-19 infection prevention and control, home-based care delivery, and decision-making for palliative care.

- Knowledge management of COVID-19-related information, including identification of research findings and channeling of findings to appropriate audiences; and development of a process for rapid literature searches/reviews. For information on the above activities, please contact Dr. Lina Moses at lmoses2@tulane.edu.

Critical Supply Chains and Goods

- UNICEF is leading joint UN efforts to access substantial quantities of critical items such as PPE and supplies for intensive care, through a joint tender where the overall allocation principles of supplies will be guided by WHO and the Supply Chain Inter-Agency Coordination Cell. The detailed process is under development.

SURVEILLANCE

Table 1. Countries, territories or areas with reported laboratory-confirmed COVID-19 cases and deaths. Data as of 8 April 2020*

Reporting Country/ Territory/Area [†]	Total confirmed ‡ cases	Total confirmed new cases	Total deaths	Total new deaths	Transmission classification [§]	Days since last reported case
Western Pacific Region						
China	83157	86	3342	2	Local transmission	0
Republic of Korea	10384	53	200	8	Local transmission	0
Australia	5956	112	45	3	Local transmission	0
Japan	4257	351	81	1	Local transmission	0
Malaysia	3963	170	63	1	Local transmission	0
Philippines	3764	104	177	14	Local transmission	0
Singapore	1481	106	6	0	Local transmission	0
New Zealand	969	26	1	0	Local transmission	0
Viet Nam	249	4	0	0	Local transmission	0
Brunei Darussalam	135	0	1	0	Local transmission	3
Cambodia	115	0	0	0	Local transmission	1
Fiji	15	1	0	0	Local transmission	0
Mongolia	15	0	0	0	Imported cases only	1
Lao People's Democratic Republic	12	0	0	0	Local transmission	1
Papua New Guinea	1	0	0	0	Imported cases only	18
Territories**						
Guam	121	8	4	0	Local transmission	0
French Polynesia	47	5	0	0	Local transmission	0
New Caledonia	18	0	0	0	Local transmission	5
Northern Mariana Islands (Commonwealth of the)	8	0	2	1	Local transmission	5
European Region						
Spain	140510	5478	13798	743	Local transmission	0
Italy	135586	3039	17129	604	Local transmission	0
Germany	103228	4003	1861	254	Local transmission	0
France	77226	3738	10313	1417	Local transmission	0
The United Kingdom	55246	3634	6159	786	Local transmission	0
Turkey	34109	3892	725	76	Local transmission	0
Belgium	22194	1380	2035	403	Local transmission	0
Switzerland	22164	590	641	0	Local transmission	0
Netherlands	19580	777	2101	234	Local transmission	0
Austria	12640	343	243	23	Local transmission	0
Portugal	12442	712	345	34	Local transmission	0
Israel	9404	793	71	19	Local transmission	0
Sweden	7693	487	591	114	Local transmission	0
Russian Federation	7497	1154	58	11	Local transmission	0
Norway	5863	108	69	10	Local transmission	0
Ireland	5709	345	210	36	Local transmission	0

Denmark	5071	390	203	16	Local transmission	0
Czechia	5017	195	88	10	Local transmission	0
Poland	4848	435	129	22	Local transmission	0
Romania	4417	360	182	25	Local transmission	0
Luxembourg	2970	127	44	3	Local transmission	0
Serbia	2447	247	61	3	Local transmission	0
Finland	2308	132	34	6	Local transmission	0
Greece	1832	77	81	2	Local transmission	0
Ukraine	1668	206	52	7	Local transmission	0
Iceland	1586	24	6	0	Local transmission	0
Croatia	1282	60	18	2	Local transmission	0
Estonia	1149	41	21	2	Local transmission	0
Republic of Moldova	1056	91	22	3	Local transmission	0
Slovenia	1055	34	36	6	Local transmission	0
Hungary	895	78	58	11	Local transmission	0
Lithuania	880	37	15	1	Local transmission	0
Armenia	877	44	8	0	Local transmission	0
Belarus	861	161	13	0	Local transmission	0
Bosnia and Herzegovina	781	86	32	4	Local transmission	0
Azerbaijan	717	76	8	1	Local transmission	0
Kazakhstan	709	39	6	0	Local transmission	0
North Macedonia	599	29	27	6	Local transmission	0
Slovakia	598	64	2	0	Local transmission	0
Bulgaria	577	28	23	1	Local transmission	0
Andorra	551	11	22	1	Local transmission	0
Latvia	548	6	2	1	Local transmission	0
Uzbekistan	534	62	3	1	Local transmission	0
Cyprus	494	29	14	0	Local transmission	0
Albania	400	23	22	0	Local transmission	0
Malta	293	52	0	0	Local transmission	0
San Marino	279	2	34	2	Local transmission	0
Kyrgyzstan	270	42	4	0	Local transmission	0
Montenegro	248	25	2	0	Local transmission	0
Georgia	208	13	3	1	Local transmission	0
Liechtenstein	78	0	1	0	Under investigation	2
Monaco	40	0	0	0	Local transmission	1
Holy See	7	0	0	0	Under investigation	5
Territories**						
Faroe Islands	184	3	0	0	Local transmission	0
Kosovo ^[1]	184	19	5	2	Local transmission	0
Jersey	170	15	3	0	Local transmission	0
Guernsey	166	12	4	1	Local transmission	0
Isle of Man	150	23	1	0	Local transmission	0
Gibraltar	113	10	1	0	Local transmission	0
Greenland	11	0	0	0	Under investigation	2
South-East Asia Region						
India	5194	1127	149	40	Local transmission	0
Indonesia	2738	247	221	12	Local transmission	0

Thailand	2369	149	30	4	Local transmission	0
Sri Lanka	186	10	6	1	Local transmission	0
Bangladesh	164	41	17	5	Local transmission	0
Myanmar	22	1	3	2	Local transmission	0
Maldives	19	0	0	0	Local transmission	5
Nepal	9	0	0	0	Local transmission	3
Bhutan	5	0	0	0	Imported cases only	5
Timor-Leste	1	0	0	0	Imported cases only	18
Eastern Mediterranean Region						
Iran (Islamic Republic of)	62589	2089	3872	133	Local transmission	0
Pakistan	4072	208	58	4	Local transmission	0
Saudi Arabia	2795	43	41	3	Local transmission	0
United Arab Emirates	2359	283	12	1	Local transmission	0
Qatar	2057	225	6	2	Local transmission	0
Egypt	1450	128	94	9	Local transmission	0
Morocco	1184	43	90	7	Local transmission	0
Iraq	1122	91	65	1	Local transmission	0
Bahrain	811	55	5	1	Local transmission	0
Kuwait	743	78	1	0	Local transmission	0
Tunisia	623	27	23	1	Local transmission	0
Lebanon	548	7	19	0	Local transmission	0
Afghanistan	423	56	14	3	Local transmission	0
Oman	419	48	2	0	Local transmission	0
Jordan	353	4	6	0	Local transmission	0
Djibouti	121	31	0	0	Local transmission	0
Libya	20	2	1	0	Local transmission	0
Syrian Arab Republic	19	0	2	0	Local transmission	2
Sudan	14	0	2	0	Local transmission	1
Somalia	8	1	0	0	Local transmission	0
Territories **						
occupied Palestinian territory	263	9	1	0	Local transmission	0
Region of the Americas						
United States of America	363321	29510	10845	1286	Local transmission	0
Canada	17049	1243	345	52	Local transmission	0
Brazil	12056	926	553	67	Local transmission	0
Chile	5116	301	43	6	Local transmission	0
Ecuador	3747	0	191	0	Local transmission	1
Peru	2561	280	92	9	Local transmission	0
Mexico	2439	296	125	31	Local transmission	0
Panama	2100	112	55	1	Local transmission	0
Dominican Republic	1956	128	98	12	Local transmission	0
Argentina	1628	74	53	7	Local transmission	0
Colombia	1579	94	46	11	Local transmission	0
Costa Rica	467	13	2	0	Local transmission	0
Uruguay	415	9	6	0	Local transmission	0
Cuba	396	46	11	2	Local transmission	0
Honduras	305	7	22	0	Local transmission	0

Bolivia (Plurinational State of)	194	11	14	3	Local transmission	0
Venezuela (Bolivarian Republic of)	165	6	7	4	Local transmission	0
Paraguay	115	2	5	0	Local transmission	0
Trinidad and Tobago	106	1	8	0	Local transmission	0
El Salvador	78	9	4	1	Local transmission	0
Guatemala	77	7	3	0	Local transmission	0
Barbados	60	4	2	1	Local transmission	0
Jamaica	59	1	3	0	Local transmission	0
Bahamas	33	4	5	0	Local transmission	0
Guyana	31	2	5	1	Local transmission	0
Haiti	25	1	1	0	Imported cases only	0
Antigua and Barbuda	15	0	0	0	Local transmission	1
Dominica	15	1	0	0	Local transmission	0
Saint Lucia	14	0	0	0	Local transmission	2
Grenada	12	0	0	0	Local transmission	3
Saint Kitts and Nevis	10	0	0	0	Imported cases only	1
Suriname	10	0	1	0	Local transmission	4
Belize	7	0	1	0	Local transmission	1
Saint Vincent and the Grenadines	7	0	0	0	Imported cases only	1
Nicaragua	6	0	1	0	Imported cases only	1
Territories**						
Puerto Rico	573	60	23	2	Local transmission	0
Martinique	151	2	4	0	Local transmission	0
Guadeloupe	139	4	7	0	Local transmission	0
French Guiana	72	4	0	0	Local transmission	0
Aruba	71	7	0	0	Local transmission	0
United States Virgin Islands	43	0	1	0	Local transmission	1
Sint Maarten	40	3	8	2	Imported cases only	0
Bermuda	39	2	2	2	Local transmission	0
Cayman Islands	39	0	1	0	Local transmission	1
Saint Martin	31	0	2	0	Under investigation	1
Curaçao	13	0	1	0	Imported cases only	1
Turks and Caicos Islands	8	3	1	0	Local transmission	0
Montserrat	6	0	0	0	Imported cases only	3
Saint Barthélemy	6	0	0	0	Under investigation	8
Anguilla	3	0	0	0	Local transmission	4
British Virgin Islands	3	0	0	0	Imported cases only	7
Bonaire, Sint Eustatius and Saba	2	0	0	0	Imported cases only	4
Falkland Islands (Malvinas)	2	0	0	0	Under investigation	2
Saint Pierre and Miquelon	1	1	0	0	Imported cases only	0
African Region						
South Africa	1749	63	13	1	Local transmission	0
Algeria	1468	45	194	21	Local transmission	0

Cameroon	555	0	9	0	Local transmission	3
Burkina Faso	364	19	18	1	Local transmission	0
Côte d'Ivoire	349	26	3	0	Local transmission	0
Ghana	287	73	5	0	Local transmission	0
Niger	278	94	11	1	Local transmission	0
Mauritius	268	24	7	0	Local transmission	0
Nigeria	254	22	6	1	Local transmission	0
Senegal	237	11	2	0	Local transmission	0
Democratic Republic of the Congo	183	22	20	2	Local transmission	0
Kenya	172	30	6	2	Local transmission	0
Guinea	144	33	0	0	Local transmission	0
Rwanda	105	1	0	0	Local transmission	0
Madagascar	92	15	0	0	Local transmission	0
Togo	58	14	3	0	Local transmission	0
Ethiopia	52	9	1	0	Local transmission	0
Uganda	52	0	0	0	Local transmission	1
Mali	47	8	5	1	Local transmission	0
Congo	45	0	5	0	Local transmission	3
Zambia	39	0	1	0	Local transmission	5
Guinea-Bissau	33	0	0	0	Imported cases only	1
Eritrea	31	2	0	0	Local transmission	0
Benin	26	3	1	0	Local transmission	0
Gabon	24	3	1	0	Imported cases only	0
United Republic of Tanzania	24	0	1	0	Local transmission	1
Angola	17	1	2	0	Imported cases only	0
Equatorial Guinea	16	0	0	0	Local transmission	3
Namibia	16	0	0	0	Local transmission	2
Liberia	14	0	3	0	Local transmission	1
Seychelles	11	0	0	0	Imported cases only	1
Zimbabwe	11	2	2	1	Local transmission	0
Chad	10	1	0	0	Local transmission	0
Eswatini	10	1	0	0	Imported cases only	0
Mozambique	10	0	0	0	Local transmission	6
Central African Republic	9	0	0	0	Local transmission	3
Malawi	8	4	1	1	Local transmission	0
Cabo Verde	7	0	1	0	Local transmission	1
Botswana	6	0	1	0	Imported cases only	1
Mauritania	6	0	1	0	Imported cases only	4
Sierra Leone	6	0	0	0	Imported cases only	2
Gambia	4	0	1	0	Imported cases only	5
São Tomé and Príncipe	4	0	0	0	Under investigation	1
Burundi	3	0	0	0	Local transmission	4
South Sudan	1	0	0	0	Under investigation	2
Territories **						
Réunion	358	9	0	0	Local transmission	0
Mayotte	184	20	2	0	Local transmission	0

Subtotal for all Regions	1352649	73639	79224	6695		
International conveyance (Diamond Princess)	712	0	11	0	Local transmission	23
Grand total	1353361	73639	79235	6695		

*Numbers include both domestic and repatriated cases

†The designations employed and the presentation of the material in this publication do not imply the expression of any opinion whatsoever on the part of WHO concerning the legal status of any country, territory, city or area or of its authorities, or concerning the delimitation of its frontiers or boundaries. Dotted and dashed lines on maps represent approximate border lines for which there may not yet be full agreement.

‡Case classifications are based on [WHO case definitions](#) for COVID-19.

§Transmission classification is based on WHO analysis of available official data and may be subject to reclassification as additional data become available. Countries/territories/areas experiencing multiple types of transmission are classified in the highest category for which there is evidence; they may be removed from a given category if interruption of transmission can be demonstrated. It should be noted that even within categories, different countries/territories/areas may have differing degrees of transmission as indicated by the differing numbers of cases and other factors. Not all locations within a given country/territory/area are equally affected.

Terms:

- **Community transmission** is evidenced by the inability to relate confirmed cases through chains of transmission for a large number of cases, or by increasing positive tests through sentinel samples (routine systematic testing of respiratory samples from established laboratories).
- **Local transmission** indicates locations where the source of infection is within the reporting location.
- **Imported cases only** indicates locations where all cases have been acquired outside the location of reporting.
- **Under investigation** indicates locations where type of transmission has not been determined for any cases.
- **Interrupted transmission** indicates locations where interruption of transmission has been demonstrated (details to be determined)

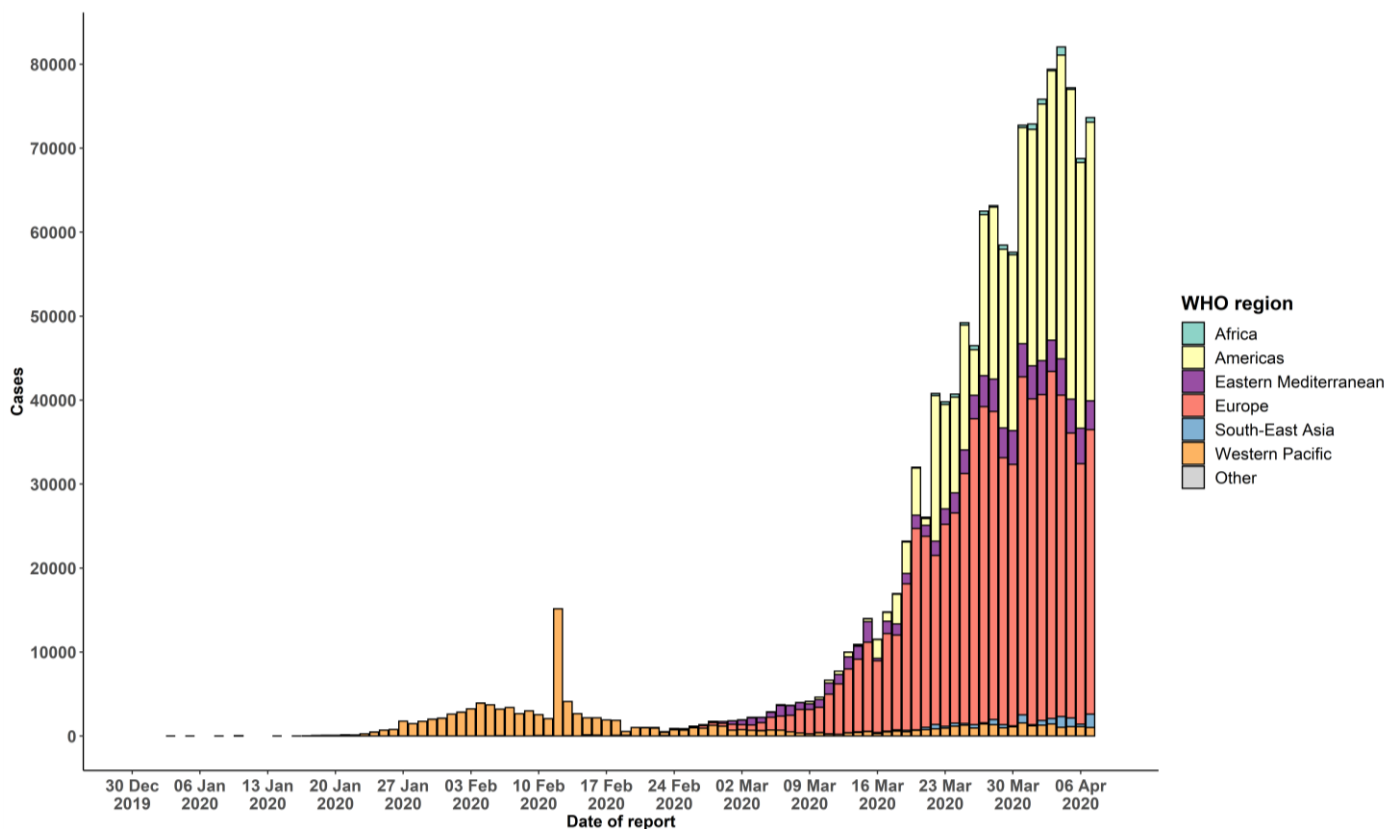
** "Territories" include territories, areas, overseas dependencies and other jurisdictions of similar status

[1] All references to Kosovo should be understood to be in the context of the United Nations Security Council resolution 1244 (1999).

Due to differences in reporting methods, retrospective data consolidation, and reporting delays, the number of new cases may not always reflect the exact difference between yesterday's and today's totals. WHO COVID-19 Situation Reports present official counts of confirmed COVID-19 cases, thus differences between WHO reports and other sources of COVID-19 data using different inclusion criteria and different data cutoff times are to be expected.

New countries/territories/areas are shown in red.

Figure 1. Epidemic curve of confirmed COVID-19, by date of report and WHO region through 8 April 2020



STRATEGIC OBJECTIVES

WHO's strategic objectives for this response are to:

- Interrupt human-to-human transmission including reducing secondary infections among close contacts and health care workers, preventing transmission amplification events, and preventing further international spread*;
- Identify, isolate and care for patients early, including providing optimized care for infected patients;
- Identify and reduce transmission from the animal source;
- Address crucial unknowns regarding clinical severity, extent of transmission and infection, treatment options, and accelerate the development of diagnostics, therapeutics and vaccines;
- Communicate critical risk and event information to all communities and counter misinformation;
- Minimize social and economic impact through multisectoral partnerships.

*This can be achieved through a combination of public health measures, such as rapid identification, diagnosis and management of the cases, identification and follow up of the contacts, infection prevention and control in health care settings, implementation of health measures for travelers, awareness-raising in the population and risk communication.

PREPAREDNESS AND RESPONSE

- To view all technical guidance documents regarding COVID-19, please go to [this webpage](#).
- WHO has developed interim guidance for laboratory diagnosis, advice on the use of masks during home care and in health care settings in the context of the novel coronavirus (2019-nCoV) outbreak, clinical management, infection prevention and control in health care settings, home care for patients with suspected novel coronavirus, risk communication and community engagement and Global Surveillance for human infection with novel coronavirus (2019-nCoV).
- WHO is working closely with International Air Transport Association (IATA) and have jointly developed a guidance document to provide advice to cabin crew and airport workers, based on country queries. The guidance can be found on the [IATA webpage](#).
- WHO has been in regular and direct contact with Member States where cases have been reported. WHO is also informing other countries about the situation and providing support as requested.
- WHO is working with its networks of researchers and other experts to coordinate global work on surveillance, epidemiology, mathematical modelling, diagnostics and virology, clinical care and treatment, infection prevention and control, and risk communication. WHO has issued interim guidance for countries, which are updated regularly.
- WHO has prepared a [disease commodity package](#) that includes an essential list of biomedical equipment, medicines and supplies necessary to care for patients with 2019-nCoV.
- WHO has provided recommendations to reduce risk of [transmission from animals to humans](#).
- WHO has published an [updated advice for international traffic in relation to the outbreak of the novel coronavirus 2019-nCoV](#).
- WHO has activated the R&D blueprint to accelerate diagnostics, vaccines, and therapeutics.
- OpenWHO is an interactive, web-based, knowledge-transfer platform offering online courses to improve the response to health emergencies. [COVID-19 courses can be found here](#) and courses in [additional national languages here](#). Specifically, WHO has developed online courses on the following topics:
 - A general introduction to emerging respiratory viruses, including novel coronaviruses (available in Arabic, Chinese, English, French, Russian, Spanish, Hindi, Indian Sign Language, Persian, Portuguese, Serbian and Turkish);
 - Clinical care for Severe Acute Respiratory Infections (available in English, French, Russian, Indonesian and Vietnamese);
 - Health and safety briefing for respiratory diseases - ePROTECT (available in Chinese, English, French, Russian, Spanish, Indonesian and Portuguese);
 - Infection Prevention and Control for Novel Coronavirus (COVID-19) (available in Chinese, English, French, Russian, Spanish, Indonesian, Italian, Japanese, Portuguese and Serbian); and
 - COVID-19 Operational Planning Guidelines and COVID-19 Partners Platform to support country preparedness and response (available in English and coming soon in additional languages).
- WHO is providing guidance on early investigations, which are critical in an outbreak of a new virus. The data collected from the protocols can be used to refine recommendations for surveillance and case definitions, to characterize the key epidemiological transmission features of COVID-19, help understand spread, severity, spectrum of disease, impact on the community and to inform operational models for implementation of countermeasures such as case isolation, contact tracing and isolation. Several protocols are available [here](#). One such protocol is for the investigation of early COVID-19 cases and contacts (the "[First Few X \(FFX\) Cases and contact investigation protocol for 2019-novel coronavirus \(2019-nCoV\) infection](#)"). The protocol is designed to gain an early understanding of the key clinical, epidemiological and virological characteristics of the first cases of COVID-19 infection detected in any individual country, to inform the development and updating of public health guidance to manage cases and reduce the potential spread and impact of infection.

RECOMMENDATIONS AND ADVICE FOR THE PUBLIC

If you are not in an area where COVID-19 is spreading or have not travelled from an area where COVID-19 is spreading or have not been in contact with an infected patient, your risk of infection is low. It is understandable that you may feel anxious about the outbreak. Get the facts from reliable sources to help you accurately determine your risks so that you can take reasonable precautions (see [Frequently Asked Questions](#)). Seek guidance from WHO, your healthcare provider, your national public health authority or your employer for accurate information on COVID-19 and whether COVID-19 is circulating where you live. It is important to be informed of the situation and take appropriate measures to protect yourself and your family (see [Protection measures for everyone](#)).

If you are in an area where there are cases of COVID-19 you need to take the risk of infection seriously. Follow the advice of WHO and guidance issued by national and local health authorities. For most people, COVID-19 infection will cause mild illness however, it can make some people very ill and, in some people, it can be fatal. Older people, and those with pre-existing medical conditions (such as cardiovascular disease, chronic respiratory disease or diabetes) are at risk for severe disease (See [Protection measures for persons who are in or have recently visited \(past 14 days\) areas where COVID-19 is spreading](#)).

CASE DEFINITIONS

WHO periodically updates the [Global Surveillance for human infection with coronavirus disease \(COVID-19\)](#) document which includes case definitions.

For easy reference, case definitions are included below.

Suspect case

A. A patient with acute respiratory illness (fever and at least one sign/symptom of respiratory disease, e.g., cough, shortness of breath), AND a history of travel to or residence in a location reporting community transmission of COVID-19 disease during the 14 days prior to symptom onset.

OR

B. A patient with any acute respiratory illness AND having been in contact with a confirmed or probable COVID-19 case (see definition of contact) in the last 14 days prior to symptom onset;

OR

C. A patient with severe acute respiratory illness (fever and at least one sign/symptom of respiratory disease, e.g., cough, shortness of breath; AND requiring hospitalization) AND in the absence of an alternative diagnosis that fully explains the clinical presentation.

Probable case

A. A suspect case for whom testing for the COVID-19 virus is inconclusive.

a. Inconclusive being the result of the test reported by the laboratory.

OR

B. A suspect case for whom testing could not be performed for any reason.

Confirmed case

A person with laboratory confirmation of COVID-19 infection, irrespective of clinical signs and symptoms.

- Technical guidance for laboratory testing can be found [here](#).

Definition of contact

A contact is a person who experienced any one of the following exposures during the 2 days before and the 14 days

after the onset of symptoms of a probable or confirmed case:

1. Face-to-face contact with a probable or confirmed case within 1 meter and for more than 15 minutes;
2. Direct physical contact with a probable or confirmed case;
3. Direct care for a patient with probable or confirmed COVID-19 disease without using proper personal protective equipment¹; OR
4. Other situations as indicated by local risk assessments.

Note: for confirmed asymptomatic cases, the period of contact is measured as the 2 days before through the 14 days *after the date on which the sample was taken* which led to confirmation.

¹ World Health Organization. Infection prevention and control during health care when COVID-19 is suspected
[https://www.who.int/publications-detail/infection-prevention-and-control-during-health-care-when-novel-coronavirus-\(ncov\)-infection-is-suspected-20200125](https://www.who.int/publications-detail/infection-prevention-and-control-during-health-care-when-novel-coronavirus-(ncov)-infection-is-suspected-20200125)